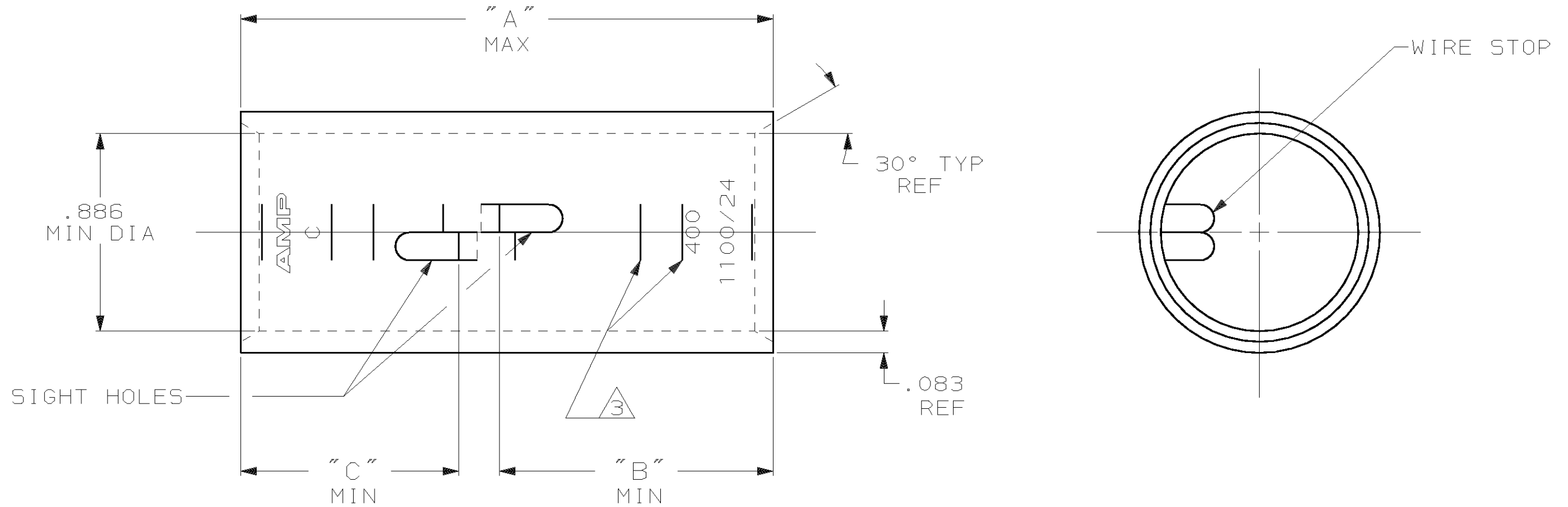


THIS DRAWING IS UNPUBLISHED. RELEASED FOR PUBLICATION, 19 .  
 © COPYRIGHT 19 BY AMP INCORPORATED. ALL INTERNATIONAL RIGHTS RESERVED.

LOC	DIST	P	F	REVISIONS				
G	86			ZONE	LTR	DESCRIPTION	DATE	APPD
					T	REV PER 063A-0637-01	030CT02	JR/MS



- ① TIN PL .000150 MIN THK PER ASTM B-545
- ② PART NO: 324465; .180 LB.  
PART NO: 1-324465-0; .180 LB.  
PART NO: 2-324465-5; .200 LB.
- ③ CRIMP LOCATION MARKS ON PART NO. 2-324465-5 ONLY.
- ④ CLEANED, UNPLATED

.97	1.22	2.45	① ③	375-450	COPPER	2-324465-5
.97	.97	2.20	④	MCM	ASTM-B-75	1-324465-0
"C"	"B"	"A"	①	WIRE RANGE	ANNEALED	324465
DO NOT SCALE PRINT. UNLESS SPECIFIED DIMENSIONS IN INCHES TOLERANCES ON: 2 PLC DEC ± - 3 PLC DEC ± - ANGLES ± -				DR 4/24/89 DK SCHRUM	<b>AMP</b>   AMP INCORPORATED Harrisburg, Pa. 17105	
MATERIAL SEE TABLE				CHK 4/24/89 MS FEHER		
FINISH SEE TABLE				APPD 11/8/89 WJ VOCKROTH	NAME SPLICE, BUTT, AMPPOWER WIRE SIZE: 400 MCM	
				APPD 11/8/89 TL SHUTTER		
				PRODUCT SPEC -	SIZE <b>B</b>	FSCM NO 00779
				APPLICATION SPEC -	DRAWING NO 324465	
				WEIGHT ②	SCALE 2:1	SHEET 1 OF 1